



**TOPO INDIA**

Envisioning Tomorrow



**CAPABILITY  
STATEMENT**

[www.topoindia.com](http://www.topoindia.com)



- **WHAT MAKES US DIFFERENT**

We have the pleasure to introduce ourselves as a specialist team of Engineers and Surveyors considered one of the esteemed firms in the profession in India. We are doing all types of precise Land Survey Since- 1988.

- **INNOVATION**

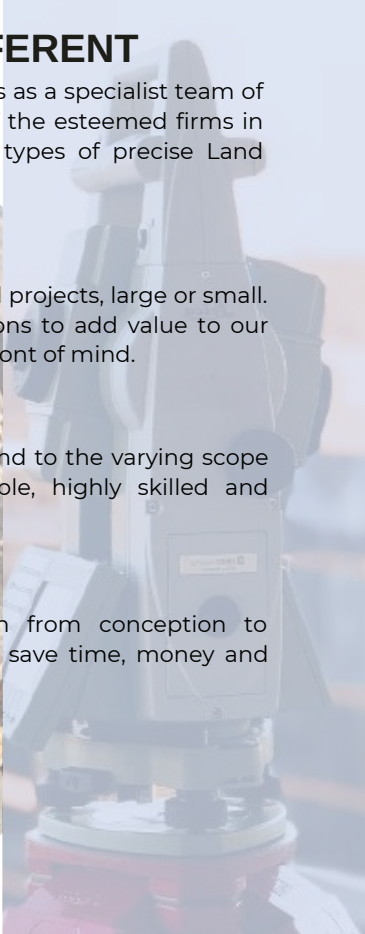
We utilise the latest technology to service all projects, large or small. We continuously develop innovative solutions to add value to our client's needs by starting with the result in front of mind.

- **FLEXIBILITY**

We have the resources to proactively respond to the varying scope of projects. Our team comprises adaptable, highly skilled and qualified professionals.

- **VALUE**

We provide a complete tailored solution from conception to completion to streamline your project and save time, money and risk.



# WE SPECIALISE IN



**3D REALITY CAPTURE with  
LiDAR**



**DIGITAL ENGINEERING  
SERVICES & SOLUTIONS**



**ENGINEERING SURVEYS**



**HYDROGRAPHIC SURVEYS**



**LAND SURVEYING &  
DEVELOPMENT SERVICES**



**MINE SURVEYING**



**RAILWAY CORRIDOR SURVEY**



**PHOTOGRAMMETRIC AERIAL  
MAPPING SURVEY**





## 3D REALITY CAPTURE WITH LiDAR

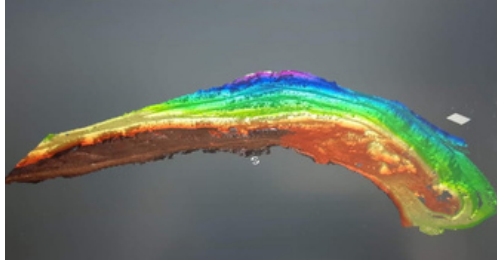
### MOBILE MAPPING

TOPO INDIA works with the most comprehensive and accurate mobile mapping systems that are superior in quality, capability and data-capture speed. The use of mobile mapping technology is TOPO INDIA' commitment to innovation and proof of positive ambition to be the leader in geospatial surveying and mapping.

Capturing spatial data within the confines of infrastructure corridors such as roads and rail lines presents challenges in terms of access, safety and minimal disruptions to corridor users. The mapping solution that data mapping requires is, in turn, determined by the accuracy needed and the application for which the data will be utilised. And this determines the point of view at which the data is captured, the timeframe required, and the accessibility to the corridor.

Coupled with high-definition 360-degree imagery, the resulting data can be used for multiple applications that span vector mapping, terrain models, contours, 3D modelling, feature extraction, geometrical analysis and asset mapping.





## DIGITAL ENGINEERING SERVICES AND SOLUTIONS

### DEM, DSM & DTM generation

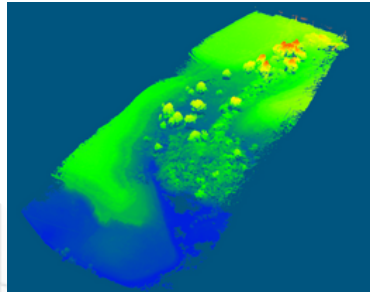
Our expert team is more than capable to deliver accurate and precise Engineering drawings and analysis of the surveyed data.

Drone based Photogrammetric data processing and Ortho-mosaic creation.

Our technical team are competent to handle large scale drone mapping data and to prepare Ortho mosaics, DEM and all other deliverables from the data.

### LiDAR data processing & analysis

With the advent of technological advancement in LiDAR data capture, we are able to capture huge amount of data in a very short span of time. The collected data needs to be processed, segregated and filtered to draw out meaningful information out of the data. Topo India's technical team is capable to seamlessly draw out the information as per client's requirement and provide meaningful insights from the data.





## ENGINEERING SURVEYS

Through continuous innovation in the construction environment, we strive to provide excellence to a range of projects in India and internationally.

When clients align with Topo India they benefit from efficient systems that ensure accuracy and precision, and without causing delays to construction projects. We offer unparalleled safety, high-quality technology and highly mobile measuring systems to cater to clients' projects from conception to completion.

Engineering Surveying Services provides critical functions in design and construction of new projects, and includes:

- survey existing conditions of a site, including topographic survey, set-out of building corners, property boundaries or bulk excavation limits.
- set-out of reference marks to guide the construction of new elements or linear structures.
- verify location of existing structures during construction.
- measurement of excavated volumes and cut-and-fill analysis
- monitoring of settlement, verticality and change in geometry of buildings, adjacent rail tracks, bridges and roads
- as-built surveys for conformance and compliance.





## HYDROGRAPHIC SURVEYS

Hydrographic surveys are undertaken to determine depths of water bodies and their underlying topographies. Using a variety of geophysical sensors, these surveys also provide valuable information about debris, objects on the seabed or buried below the surface, or the thickness of sediment layers.

### HYDROGRAPHIC SURVEYS

Topo India is an early adopter of the latest, proven technologies. This means we have tried and tested workflows that allow our surveying teams to work smarter and more efficiently. The benefits of using hydrographic surveys encompass:

- seabed bathymetric (depth measurement) surveys and digital terrain models (DTM) for navigation assessment and under-keel clearance.
- support for dredging operations.
- determining sedimentation levels or thickness.





## LAND SURVEYING & DEVELOPMENT SERVICES

Our expertise in Land Surveying has been prevalent across the globe, be it Topographical Surveying of the cityscape project in Sudan Africa or to traverse Ropeway Alignment in the harsh terrains of Sikkim, Bhaledunga our competent Land Surveyors has played an instrumental role in these projects.

With the use of latest technology, we have used our conventional knowledge and expertise to draw out the best of two worlds.

Our Land Surveyors are playing a major role in various construction projects across India and are delivering proven results by working seamlessly with the Civil Engineers from client's end.







## MINE SURVEYING

At TOPO INDIA, our experienced mine surveyors and survey technicians use leading-edge technology and a suite of complementary skills to deliver successful mine surveying solutions across India. Above and below ground, we have the know-how to ensure our clients always have the mine services they need to advance their operations.

Our extensive mining and geophysical surveying background and experience, from exploration through to closure, equip us with in-depth knowledge of green and brownfields projects. The team is experienced in all mining commodities and all contemporary mining techniques.

Alternatively, we provide experienced mining surveyors at competitive rates to complement clients' own staff surveyors.

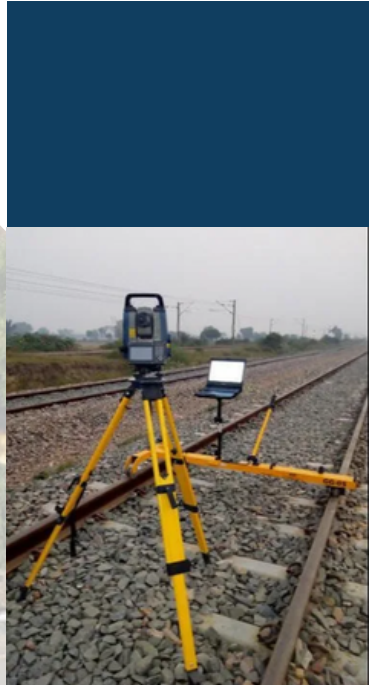




## RAILWAY CORRIDOR SURVEY

Rail track surveys comprises a group of services that TOPO INDIA provides to assist clients in the installation of new rail tracks or the maintenance of existing tracks. This includes all associated infrastructure within the rail environment such as civil engineering elements, overhead wiring and signaling, electrical infrastructure.

TOPO INDIA has been instrumental in conducting the Topographical Survey of the newly proposed branch line in West Bengal, Nalhati in Birbhum District. We have successfully delivered meaningful insight about the land parcels belonging to Eastern Railway in this project and could seamlessly propose the best fit alignment to our client with our surveyed data.





## PHOTOGRAMMETRIC AERIAL MAPPING SURVEY

With the emergence of Drone Survey TOPO INDIA has positioned themselves as a leading drone survey provider in India.

We provide much emphasis on the accuracy of the data capture by using multi frequency DGPS to create Ground Control Stations before conducting the Survey.

Our drone pilot or one of our base pilots will discuss your project requirements to enable design of a fit-for-purpose solution for your project. Safety is our first priority and a thorough risk assessment is completed to ensure compliance with site conditions, local & DGCA 's regulations, Civil Aviation Safety Authority restrictions and our ability to maintain safe distances from the public. We are highly experienced in applying for permits to fly in restricted airspace and only fly tried and tested aircraft with multiple levels of redundancy.

Survey planning includes ground control requirements, mission parameters such as overlap, altitude, safe take-off and landing positions, and fit-for-purpose sensors. The importance of the coordinate reference system cannot be overstated: we ensure that our surveys tie in with clients' existing survey information and local grid or UTM survey datum.



# TOPO INDIA

Envisioning Tomorrow



9433045446/ 7003475232



2B SARAT PARK KOLKATA  
700078, INDIA



topoindia@gmail.com



www.topoindia.com

